

IMPACT EDGE

Impact edge is a tough and durable, yet highly decorative edging for architectural doors.

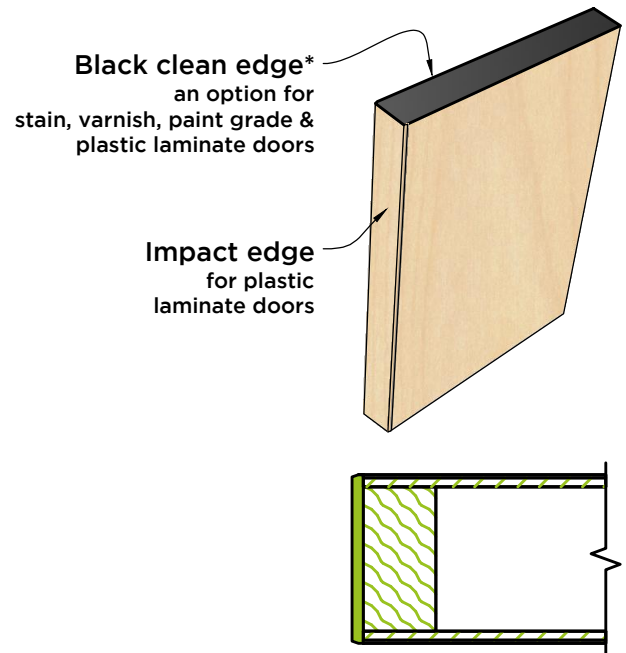
SUPERIOR AESTHETICS

Unparalleled design flexibility - Impact edges offers a variety of colours, opacities, gloss levels, and surface textures to meet basic needs or the latest trends.

IMPACT RESISTANCE

Impact edges offer exceptional protection from damage to the edge of surfaces. Particularly suited to doors installed in areas such as hospital patients' and intense traffic rooms, where doors are subjected to sharp impact from stretchers, food carts, etc. Impact edge decreases part failures that may occur due to handling and during installation.

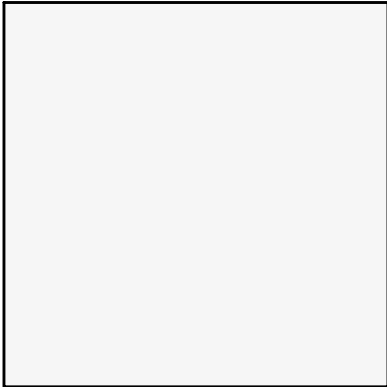
Proven track record with regulatory compliance - Agency approvals include FDA , USP VI, UL, CSA, IEC, and RoHS



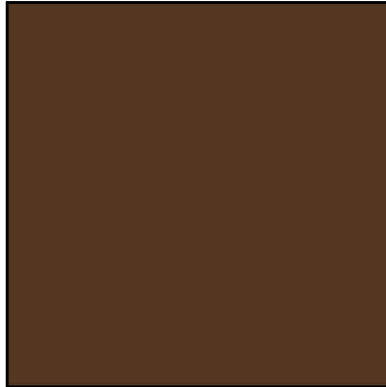
PHYSICAL PROPERTIES	VALUE	ASTM NO.
Hardness (Durometer D)	82	D 2240
Tensile Strength at 78 °F (psi)	7670	D 638
Drop Impact Resistance at 73 °F (in-lb/mil)	3	D 4226
Flexural Strength (psi)	13 000	D 790
Izod Impact on 73 °F (ft lbs./in. notch) D	2.6	256 A
Colours	Variety of colours available on request (solid or wood grain) such as colour chart from Formica, Nevamar and Wilsonart. 1.6 & 3 mm colour in stock to match	
	<input type="checkbox"/> Formica frosty white 949-58 <input type="checkbox"/> Formica dark chocolate 2200-58	<input type="checkbox"/> Formica cognac maple 7738-58 <input type="checkbox"/> Formica natural maple 756-58 <input type="checkbox"/> Nevamar Santa Rosa WZ2001T
Specifications (Available for plastic laminated doors)	A full-length door edge shall be applied to (both) (hinge) (lock) vertical edges. Impact Edge colour shall be approved. Edges shall be attached with adhesive.	
Advantages of Vinyl Rigid edges applied after Face Veneers	1. Outstanding protection of the edges of face veneers from splintering or breakage from impact. (3 mm thickness is our standard) 2. Available in positive or neutral pressure fire rated doors. (max 1.6 mm) 3. Available on 1 or 2 edges. 4. Colour permeates thickness of the Impact edge.	5. Reduced part failures where discoloration or cracking may occur from many common chemicals such as food, oils, cleaners and detergents. 6. Vinyl Rigid's inherent flame resistance enables the compounds to achieve UL flammability rating without costly testing procedures or the use of additives that may affect part performance.

* Black clean edge 1/16" (1mm) are designed with no roughness allowing top surfaces to be quickly and easily cleaned.

IMPACT EDGE COLOUR IN STOCK TO MATCH
(Other colours available on request)



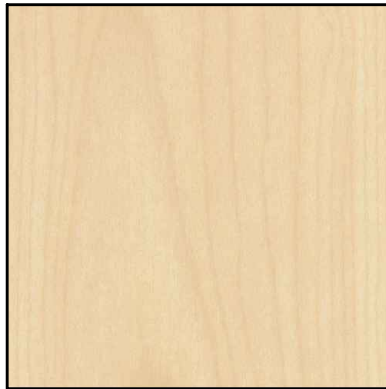
Formica frosty white 949-58



Formica dark chocolate 2200-58



Formica cognac maple 7738-58

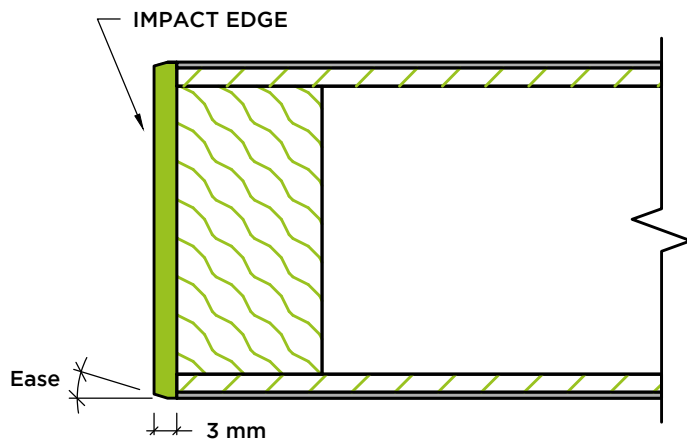
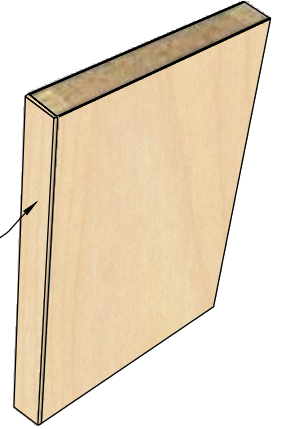


Formica natural maple 756-58



Nevamar Santa Rosa WZ2001T

Impact edge
for plastic
laminate doors



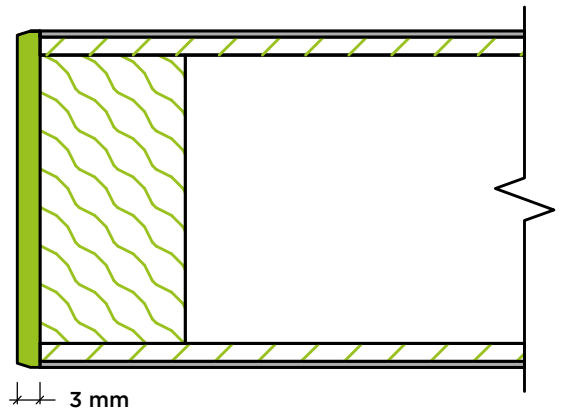
SPECIFY STILE(S):

- BOTH
- LOCK SIDE
- HINGE SIDE

COLORS MAY DIFFER FROM THE ILLUSTRATIONS.
FOR REFERENCE ONLY

Black clean edge*
an option for
stain, varnish, paint grade &
plastic laminate doors

Impact edge
for plastic
laminate doors



Impact edge
for plastic
laminate doors

