

TECHNICAL DETAILS

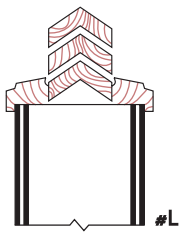
YOUR "CUSTOM-MADE" SPECIALIST

The Baillargeon team can meet all your requirements:

- | Wood veneer
- | Plastic laminate
- | Type of opening
- | Moulding
- | Selection of mouldings
- | Louver
- | Milling for any application

We also offer many other options such as oversized, French, recessed panel, Dutch, sliding, swinging or folding doors. Contact us!

STANDARD LOUVER



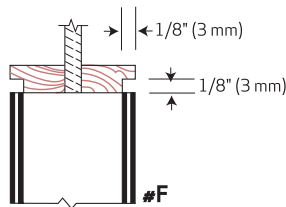
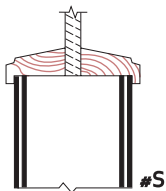
Manufacturer's choice of hardwood or matched to the face on request. Oak or birch in stock. For 1 3/8" (35 mm) or 1 3/4" (44 mm) door. Inverted V-shaped wood louver. This system allows aeration equivalent to 30% of the surface.

LITE BEAD PROFILES

Manufacturer's choice of moulding milled from the same wood as the faces or matched to the face

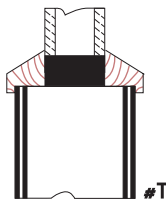
Standard models

Oak or birch in stock



Thermos (Thermal)

3/4" (19 mm) thick for 1 3/4" (44 mm) or 2 1/4" (57 mm) door
Birch in stock

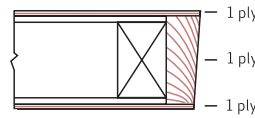


Other models: available upon request or to specifications

EDGES AND RAILS

No. 1 "Edge"

3-ply door. No visible reinforcement ply (dummy joint)



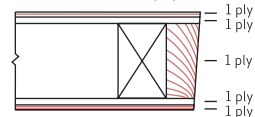
Standard Baillargeon edge on both sides. Clearance 1/8" over 2" (3 mm over 51 mm)

Standard lock and hinge side



No. 2 "Edge"

5-ply door. 1 visible reinforcement ply



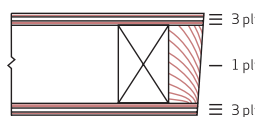
Square edge

Upon request



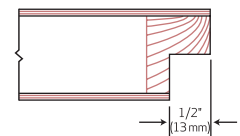
No. 3 "Edge"

7-ply door. 3 visible plies on each side of the core



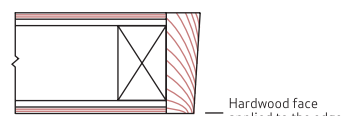
Notched top door rail or impost bottom

Upon request



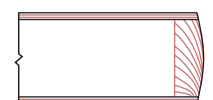
No. 4 "Edge"

Hardwood face applied to the edge



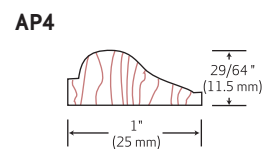
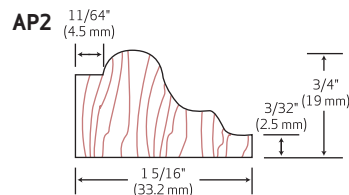
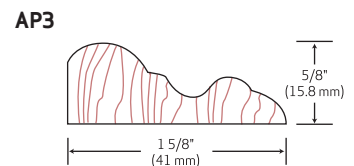
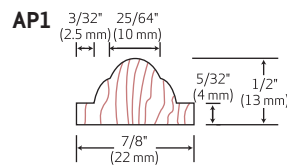
Curved

For double-acting doors 1 5/32" (29.36 mm) standard curve. Other options on request



STANDARD DECORATIVE MOULDING PROFILES

Manufacturer's choice of hardwood or matched to the face upon request. Oak or birch in stock



Other models: available upon request or to specifications