

PC5-MO/ME/VE (5 PLY)

PARTICLE CORE

1 STILES: Hardwood or structural composite lumber (SCL), including a **7/16" (11 mm)** piece of hardwood, for a total width of **1 3/16" (30 mm)**:

MO: Manufacturer's choice

ME: Matched with faces

VE: SCL covered with 1/32" (0.7938 mm) of wood veneer, matched with faces

Bonded to core

2 TOP AND BOTTOM RAILS: **1 3/16" (30 mm)** in wood or SCL, manufacturer's choice.

Bonded to core

3 CORE: Solid particleboard. Density of 28-32 lbs per cubic foot. Complies with CSA-0188 and ANSI A208-1 standards (LD-1/LD-2)

4 FACES: Wood veneer (choice of face veneers; 2 ply plywood), hardboard panel or plastic laminate glued to composite crossband

LOCK BLOCK: Integrated

GLUE: Type1 PVA Cross-link (UFF)

INTERIOR USE

WARRANTY: LIFETIME

OPTIONS

| For 3 ply plywood, specify PC7-MO or PC7-ME or PC7-VE

| 20 minute fire rating, specify PC520/PC720-MO or PC520/PC720-ME or PC520/PC720-VE

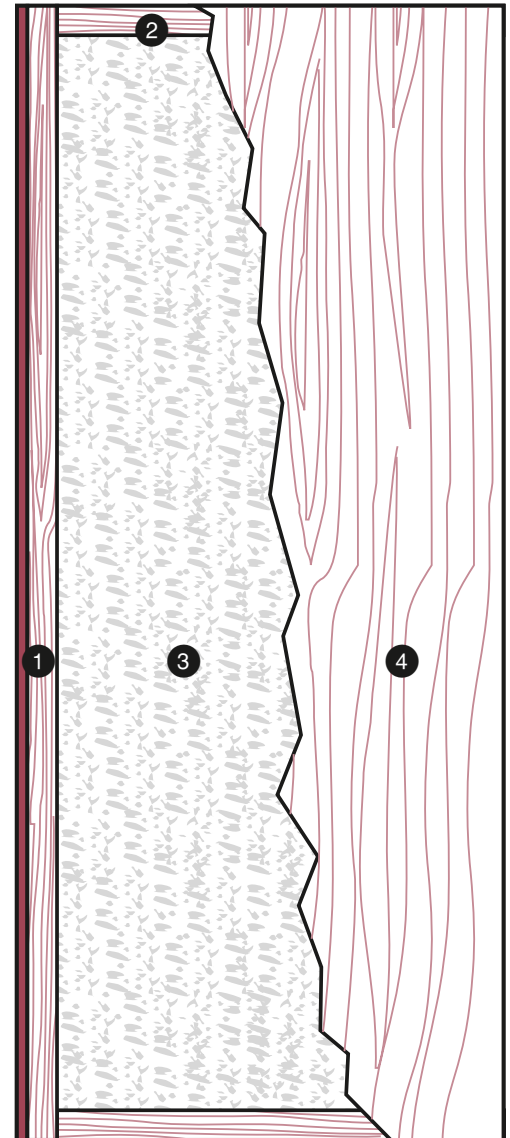
| * To get M.R. 6, specify agrifibre core (PC5-MO-AF • PC5-ME-AF • PC5-VE-AF)

| ** To get M.R. 7, specify agrifibre core (PC5-MO-AF • PC5-ME-AF • PC5-VE-AF) and FSC wood veneer faces

| *** To get I.E.Q. 4.4, specify agrifibre core (PC5-MO-AF • PC5-ME-AF • PC5-VE-AF) and UFF wood veneer faces

NOTE

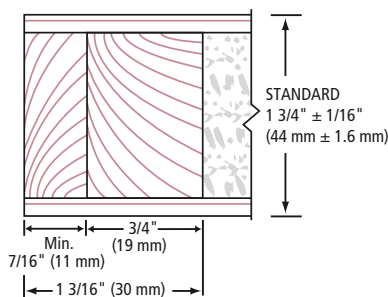
| Dimensions are nominal before trimming.



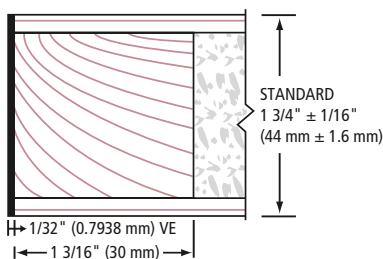
LEED ELIGIBLE CREDITS	M.R.		I.E.Q.				
	4.1	4.2	5.1	5.2	6	7	4.4 (UFF)
	✓	✓	✓	✓	*	**	***

Standards meet or exceed:
A.W.I./A.W.M.A.C. section 1300: 2.0 2005,
W.D.M.A. 1.S.1A-04 and CSA 0132.2 90

1 STILES MO/ME



1 STILES VE



2 RAILS

