

9600-MO/ME/VE (5 PLY)

HOLLOW CORE, FOR INTENSIVE USE

1 STILES: Hardwood or laminated strand lumber (LSL) or **1/8" (3 mm)** thick veneer, longitudinally laminated by hot pressing with type 1 structural glue, as per ASTM-D5456-93 (LVL), including a **7/16" (11 mm)** piece of hardwood, for a total width of **1 3/16" (30 mm)**:

MO: Manufacturer's choice

ME: Matched with faces

VE: Covered with 1/32" (0.7938 mm) wood veneer, matched with faces

2 TOP AND BOTTOM RAILS: **1 3/16" (30 mm)** in wood or SCL, manufacturer's choice

3 CORE: 4 3/4" (120 mm) honeycomb (100% recycled)

4 FACES: Wood veneer (choice of face veneers: 2 ply plywood), hardboard panel or plastic laminate glued to composite crossband

LOCK BLOCK: Lock materials manufacturer's choice. Low-density wood parts 4 1/4" (108 mm) wide x 20" (508 mm) long (including stile)

GLUE: Type1 PVA Cross-link (UFF)

INTERIOR USE

WARRANTY: 3 years

OPTIONS

| Lock block on both sides

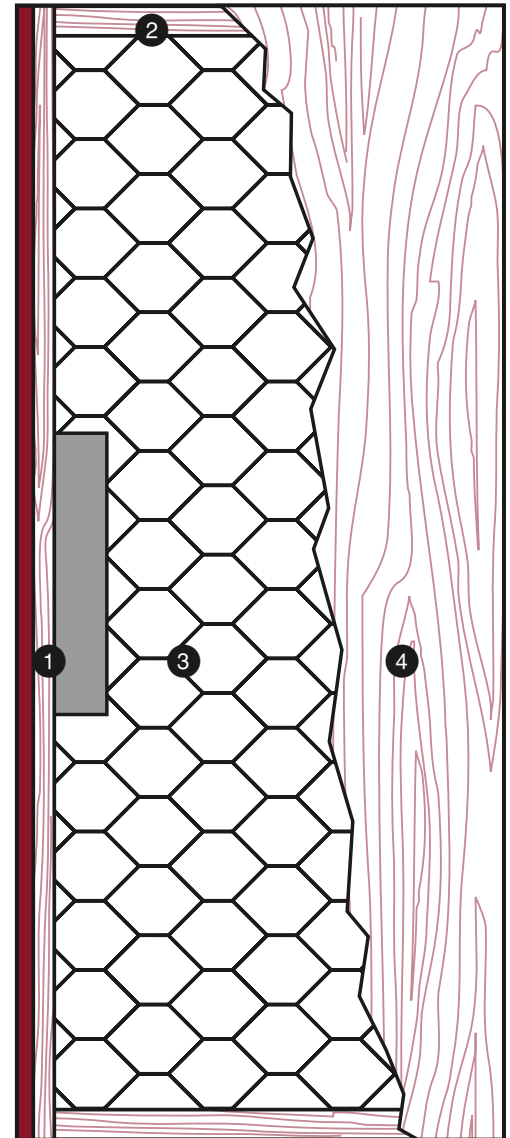
| Wood veneer glued to veneer plywood (3 ply plywood)

| ** To get M.R. 7, specify FSC wood veneer faces

| *** To get I.E.Q. 4.4, specify UFF wood veneer faces

NOTE

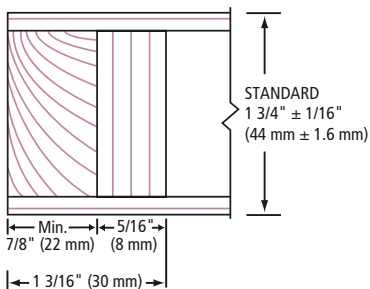
| Dimensions are nominal before trimming.



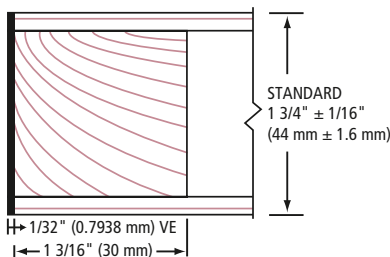
LEED ELIGIBLE CREDITS	4.1		4.2		M.R. 5.1		5.2	6	7	I.E.Q. 4.4 (UFF)
					✓	✓			**	***

Standards meet or exceed:
A.W.I./A.W.M.A.C. section 1300: 2.0 2005,
W.D.M.A. 1.S.1A-04 and CSA 0132.2 90

1 STILES MO/ME



1 STILES VE



2 RAILS

