

# 8600-MO/ME/VE (5 PLY)

## PARTICLE CORE, FOR INTENSIVE USE

**1 STILES:** Hardwood or laminated strand lumber (LSL) or **1/8" (3 mm)** thick veneer, longitudinally laminated by hot pressing with type 1 structural glue, as per ASTM-D5456-93 (LVL), including a **7/8" (22 mm)** piece of hardwood, for a total width of **1 3/16" (30 mm)**:

**MO:** Manufacturer's choice

**ME:** Matched with faces

**VE:** Covered with 1/32" (0.7938 mm) wood veneer, matched with faces

**2 TOP AND BOTTOM RAILS:** **1 3/16" (30 mm)** in wood or SCL, manufacturer's choice (LVL or LSL).

**3 CORE:** Solid particleboard. Density of 28-32 lbs per cubic foot. Complies with CSA-0188 and ANSI A208-1 standards (LD-1/LD-2)

**4 FACES:** Wood veneer (choice of face veneers; 2 ply plywood), hardboard panel or plastic laminate glued to composite crossband

**LOCK BLOCK:** Integrated

**GLUE:** Type 1 PVA Cross-link (UFF)

**INTERIOR USE**

**REFERENCE** FPC-5/FPC-7 (AWI/AWMAC)

**WARRANTY: LIFETIME**

### OPTIONS

| 20 minute fire rating, specify 8620-MO or 8620-ME or 8620-VE

| Wood veneer glued to veneer plywood (3 ply plywood)

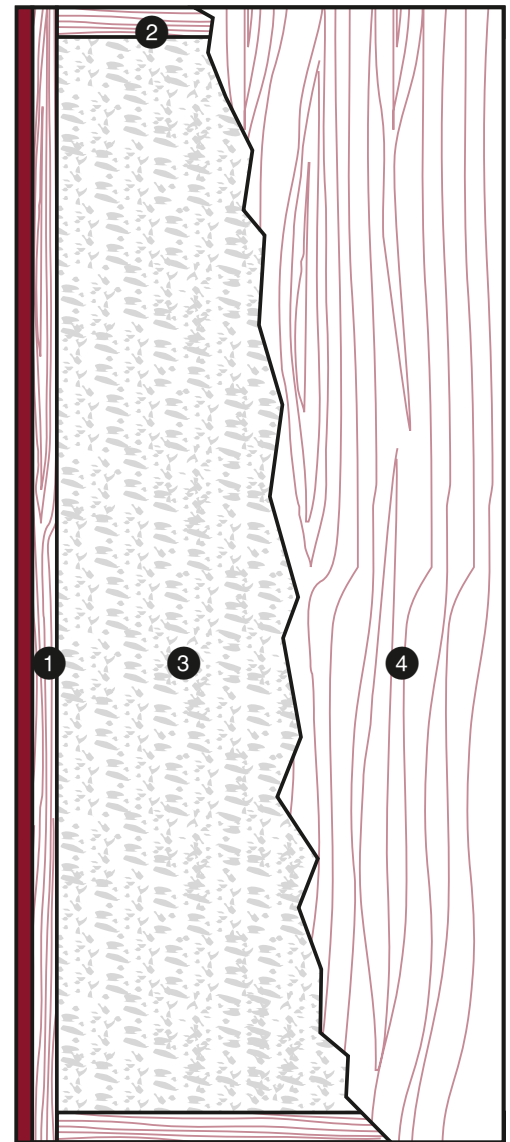
| \* To get M.R. 6, specify agrifibre core (8620-MO-AF • 8620-ME-AF • 8620-VE-AF)

| \*\* To get M.R. 7, specify agrifibre core (8620-MO-AF • 8620-ME-AF • 8620-VE-AF) and FSC wood veneer faces

| \*\*\* To get I.E.Q. 4.4, specify agrifibre core (8620-MO-AF • 8620-ME-AF • 8620-VE-AF) and UFF wood veneer faces

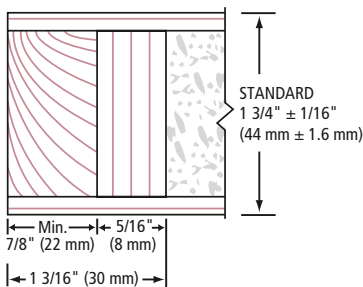
### NOTE

| Dimensions are nominal before trimming.

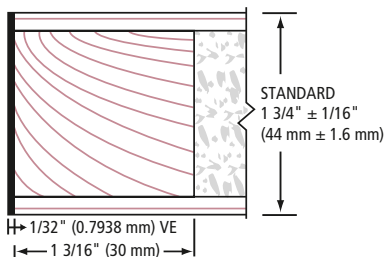


<b>LEED</b> ELIGIBLE CREDITS	4.1		4.2		M.R.		I.E.Q.		Standards meet or exceed: A.W.I./A.W.M.A.C. section 1300: 2.0 2005, W.D.M.A. 1.S.1A-04 and CSA 0132.2 90
	✓	✓	✓	✓	6	7	4.4 (UFF)	***	

### 1 STILES MO/ME



### 1 STILES VE



### 2 RAILS

