

## 8500-ME (5 PLY)

### PARTICLE CORE, ULTRA HEAVY-DUTY, ANTI-WARPING CONSTRUCTION FOR INTENSIVE USE

- ❶ **STILES:** 1/8" (3 mm) thick veneer, longitudinally laminated by hot pressing with type 1 structural glue, as per ASTM-D5456-93 (LVL FSC), including a 7/8" (22 mm) piece of hardwood, matched with faces, for a total width of 4 3/16" (107 mm).
- ❷ **TOP AND BOTTOM RAILS:** 1/8" (3 mm) thick veneer, longitudinally laminated by hot pressing with type 1 structural glue, as per ASTM-D5456-93 (LVL FSC), or laminated strand lumber (LSL) for a total width of 3 5/16" (85 mm).
- ❸ **CORE:** Solid particleboard. Density of 28-32 lbs per cubic foot. Complies with CSA-0188 and ANSI A208-1 standards (LD-1/LD-2). Available NAUF/FSC (LD-2).
- ❹ **FACES:** Wood veneer (choice of face veneers; 2 ply plywood), hardboard panel or plastic laminate glued to composite cross-band. Available NAUF/FSC.

**LOCK BLOCK:** Integrated.

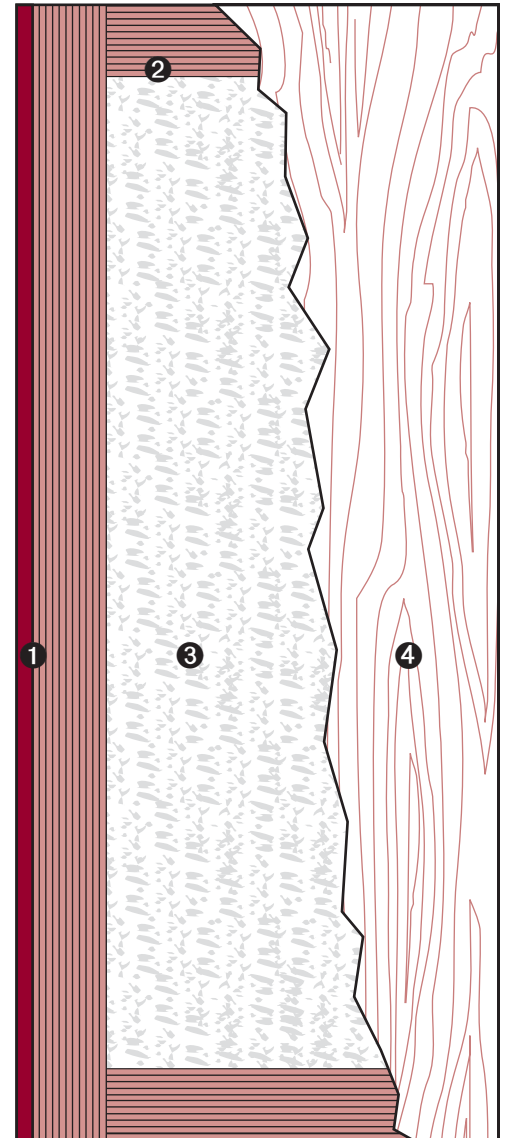
**GLUE:** Type 1 PVA Cross-link (NAUF).

**INTERIOR** use

**WARRANTY:** Lifetime

#### OPTIONS

- | 20 min fire rating, specify 8520-ME, 8520-ME NAUF/FSC or 8520-ME-AF.
  - | Wood veneer glued to plywood veneer (3 ply plywood) (7 ply door).
  - | Autonomy door available, specify 8513-ME, 8513-ME NAUF/FSC or 8513-ME-AF.
  - | Available **STC 30** according to sound rating hardware configuration.
  - | \* To get M.R. 6.0, specify agrifibre core (8500-ME-AF).
  - | \*\* To get M.R. 7.0: **Option 1:** specify particleboard core NAUF/FSC (8500-ME NAUF/FSC) and FSC faces to optimize. **Option 2:** specify agrifibre core (8500-ME-AF) and FSC faces, only when M.R. 6.0 is also required.
  - | \*\*\* To get IEQ. 4.4, specify particleboard core NAUF/FSC (8500-ME NAUF/FSC) or agrifibre core (8500-ME-AF) and NAUF or NAUF/FSC faces.
  - | ◦ Subject to evaluation. Contact us.
- NOTE**
- | Dimensions are nominal before trimming.



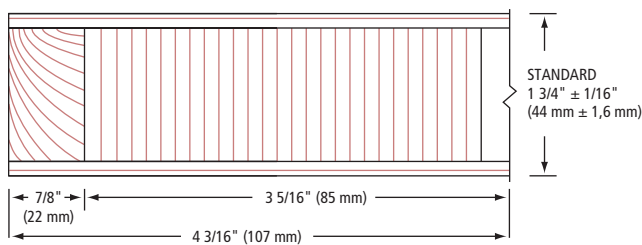
FSC® certified products available on request.



LEED Eligible Credits	MR		IEQ		ID 1	PR 2		
	3	4	5	6	7	3.2	4.4	mode 2
✓	✓	✓	*	**	○	***	○	○

Standards meet or exceed:  
A.W.S. section 9, October 1, 2009;  
W.D.M.A. 1.S.1A-2013

#### ❶ STILES ME



#### ❷ RAILS

