

# 5045/60/90-MO/VE NEUTRAL PRESSURE (5 PLY)

## 45-60-90 MINUTE FIRE-RESISTANT DOOR, MINERAL CORE

- 1 STILES:** Special construction compliant with W/H label requirements. High-density mineral and untreated hardwood (minimum of 3/4");  
**MO:** Manufacturer's choice  
**VE:** Covered with 1/32" (0.7938 mm) of wood veneer, matched with faces  
**Bonded to core**
- 2 TOP AND BOTTOM RAILS:** Special construction compliant with W/H label requirements. Mineral or untreated hardwood, manufacturer's choice (minimum of 1 3/8").  
**Bonded to core**
- 3 CORE:** Non-combustible mineral (UFF). **Neutral FSC.**
- 4 FACES:** Wood veneer (choice of face veneers; 2 ply plywood), hardboard panel or plastic laminate glued to composite crossband

**GLUE:** Type 1 PVA Cross-link (UFF)

**MAXIMUM DIMENSIONS:** 4' x 10' (single), 8' x 9' (double)

**NOTE:** Max. 3/4" (19 mm) cut allowed at bottom of door upon installation (see NFPA 80)

**INTERIOR USE**

**WARRANTY: LIFETIME**

For technical information, please consult our "5045/60/90 Technical Specification" sheet.

**OPTIONS**

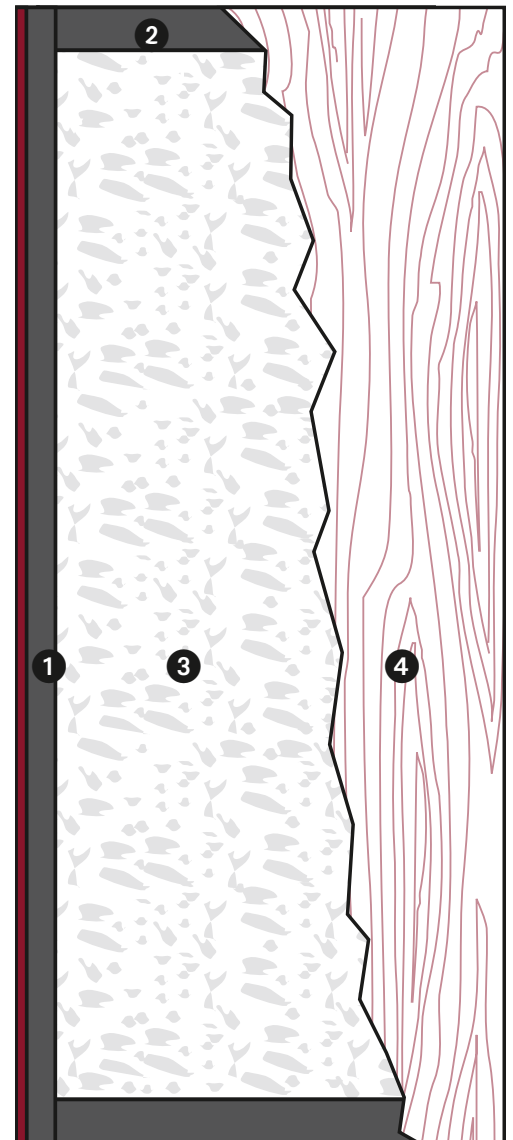
- | Positive pressure available (PP)
- | Hardware reinforcements
- | Wood veneer glued to veneer plywood (3 ply plywood)
- | \*\* To get M.R. 7, specify FSC wood veneer faces
- | \*\*\* To get I.E.Q. 4.4, specify UFF wood veneer faces

**WARNING**

- | Pre-machining must be done in factory or by an authorized distributor in order to maintain our warranty and comply with W/H requirements (see NFPA 80).
- | Certain applications may require reinforcement.

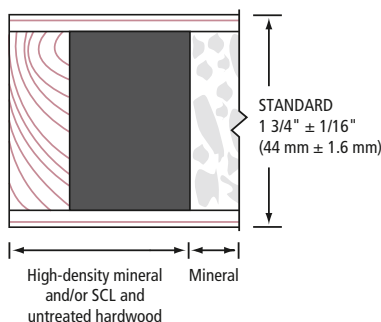
**NOTE**

- | Dimensions are nominal before trimming.

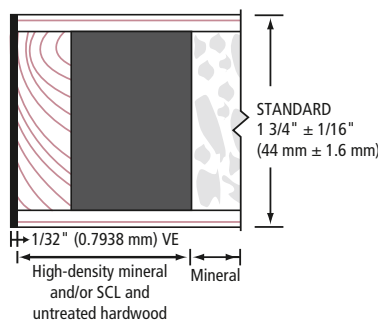


<b>LEED</b> ELIGIBLE CREDITS	M.R.		I.E.Q.		Standards meet or exceed: A.W.I./A.W.M.A.C. section 1300: 2.0 2005, W.D.M.A. 1.S.1A-04 and CSA 0132.2 90		
	4.1	4.2	5.1	5.2		6	7
						**	***

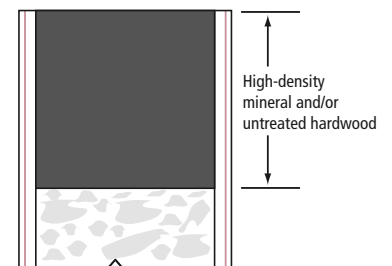
**1 STILES MO**



**1 STILES VE**



**2 RAILS**



# FIRE-RESISTANT DOORS | NEUTRAL PRESSURE

	FIRE RATING   INTERTEK TESTING SERVICES	MINERAL 90-MINUTE	MINERAL 60-MINUTE	MINERAL 45-MINUTE	PARTICLE 20-MINUTE
<b>DOOR FRAME</b>	Single sizes:	48" x 120"	48" x 120"	48" x 120"	48" x 120"
	Transom: (Maximum size)	48" x 40"	48" x 40"	48" x 40"	48" x 40"
	No transom bar or astragal required (may be used if desired)	Approved	Approved	Approved	Approved
	Pairs: Three point latching height	96" x 96"	96" x 96"	96" x 96"	96" x 120"
	Pairs: Surface vertical rods – M/Edges	96" x 96"	96" x 108"	96" x 108"	96" x 120"
	Pairs: Concealed vertical rods	Approved	Approved	Approved	Approved
	With 5" metal edges	96" x 108"	96" x 108"	96" x 108"	N/A
	With no 5" metal edges	96" x 96"	96" x 96"	96" x 96"	96" x 108"
	Pairs: Double egress	96" x 96"	96" x 96"	96" x 96"	96" x 120"
	Pairs: No metal edges and no intumescent seals	72" x 84"	72" x 84"	72" x 84"	72" x 84"
	Dutch doors	N/A	48" x 96"	48" x 96"	48" x 96" / 96" x 96"
	Molded hardboard skins	N/A	36" x 96" / 42" x 84"	84" x 84"	36" x 96"
	Faces: Plywood 3/4 PCF or denser	Approved	Approved	Approved	Approved
	Faces: Hardboard (ANSI A 135.4)	Approved	Approved	Approved	Approved
	Faces: Decorative laminates	Approved	Approved	Approved	Approved
	Stiles: All wood (Hinge stile only)	N/A	N/A	N/A	1.375"
	Stiles: Firestop I (No wood)	1"	0.75"	Optional	Optional
	Stiles: Firestop II (With wood)	1.53"	1.41" (Optional)	1.41" (Optional)	Optional
	Extra wide stiles	Approved	Approved	Approved	Approved
	Rails: All wood	N/A	N/A	N/A	2.625" (Top & Bottom)
	Rails: Top Firestop I (No wood) (Standard)	2"	2"	2"	Optional
	Rails: Top Firestop II (With wood) (Optional)	1.53"	1.41"	Optional	Optional
Rails: Bottom Firestop I (Standard)	2"	2"	Optional	Optional	
Rails: Extra wide Firestop - No maximum	Approved	Approved	Approved	Approved	
<b>HARDWARE</b>	Latches: Labelled mortise type	Approved	Approved	Approved	Approved
	Locks: Labelled mortise & integral	Approved	Approved	Approved	Approved
	Surface mounted vertical rods	Approved	Approved	Approved	Approved
	Concealed vertical rods	Approved	Approved	Approved	Approved
	Top rod only W/O thermal pins	N/A	N/A	N/A	N/A
	Top rod only with thermal pins	Approved	Approved	Approved	Approved
	Flush bolts: Automatic & manual with extensions	Approved	Approved	Approved	Approved
	Dead bolts	Approved	Approved	Approved	Approved
	Vision light size: Per NFPA 80	100 Sq.In	100 Sq.In	1296 Sq.In	1296 Sq.In
	Viewers: Labelled for door rating	Max. 1" Dia.	Max. 1" Dia.	Max. 1" Dia.	Max. 1" Dia.
	Automatic door bottom: Max width 48"	1" x 1.75"	1" x 1.75"	1" x 1.75"	1" x 1.75"
	Louvers (2 maximum)	24" x 24"	24" x 24"	24" x 24"	24" x 24"
	Protection plates	48" x 48"	48" x 48"	48" x 48"	16" x 48"
	Wire chase (raceway)	0.375" x 0.375"	0.375" x 0.375"	0.375" x 0.375"	N/A
	Plant-on moulding	2.5" x 0.75" (Wood)	2.5" x 0.75" (Wood)	2.5" x 0.75" (Wood)	2.5" x 0.75" (Wood)
	Concealed closer	N/A	N/A	N/A	Approved
	Hinges: Paumelle	Approved	Approved	Approved	Approved
	Hinges: Pivot	Approved	Approved	Approved	Approved
	Hinges: Mortised 4.5" x 4.5" & 4" x 4"	Approved	Approved	Approved	Approved
	Hinges: Labelled spring type	Approved	Approved	Approved	Approved
Hinges: Double knuckle type	Approved	Approved	Approved	Approved	
Hinges: Invisible SOSS 418 type	Approved	Approved	Approved	Approved	

NOTE: Some hardware requires special blocking. Check manufacturing specifications.



45, 60 AND 90-MINUTE FIRE-RESISTANT MINERAL CORE DOOR	
Machining Information   Maximum Door Sizes	
DOOR TYPE	MAXIMUM SIZE
Simple - swing	4' x 9' (1219 mm x 2743 mm)
Pairs - conventional	8' x 9' (2438 mm x 2743 mm)
Pairs - double egress	8' x 8' (2438 mm x 2438 mm)
Category "A" & "B" positive pressure	

**TRANSOM PANELS | CATEGORY "A" AND CATEGORY "B"\***

Mineral core

**Transoms:**

- | Maximum size – Width of the door leaf x 3'4" above the door.
- | Transom bar required between door and transom panel.

**Side panels:**

- | 4' x 9' (45 and 60 minutes) max.
- | 4' x 8' (90 minutes) max.

**Frames:**

- | Doors and transom panels must be installed in listed and labelled minimum 16 gauge steel frames.

\*Please note that category "A" and "B" differ by the composition of their respective stiles and rails.

**HARDWARE OPTIONS**

**Latching options:**

- | Mortised and cylindrical (single)
- | 3 & 4 point on surface and concealed latching standard and double egress

**Optional construction:**

- | Automatic door bottom
- | Installed blocking

**Hardware L/L: (Listed and labelled)**

- | G-P Firestop Plus frame
- | Steel frame – 16 to 18 gauge min.
- | Listed category "C" frame
- | Deadbolts
- | L/L Proprietary frames
- | Electric raceways
- | L/L Continuous hinges
- | L/L Spring hinges
- | Cylindrical latch sets
- | Mortise latch sets
- | Floor closers
- | Surface mounted closers
- | Louvers
- | Automatic door bottoms
- | Strikes – electric/open back
- | Bolts – Automatic, manual, surface
- | Viewers
- | Metal edges (not required)
- | Astragals (not required)
- | Edge guards (not required)
- | Protective plates (to 48" high)
- | Plant-on
- | CVRs
- | EPT power transfer unit
- | Von Duprin EPT Device **(45 and 60 minutes only)**

**Fire exit devices:**

- | L/L rim type, mortise type
- | Surface mounted vertical rods
- | Labelled surface mounted vertical LBR
- | Adams Rite 3900 LBR
- | Sargent series 12-8700 CTL
- | Von Duprin concealed **(45 minutes only)**

**Allowable faces:**

- | Veneer
- | Hardboard
- | Decorative laminates
- | Plywood

**Transoms and side panels:**

- | Transom assemblies to a maximum height of 3'4" above the door
- | Side panels allowed to 4' x 9' **(45 and 60 minutes only)**
- | Side panels allowed to 4' x 8' **(90 minutes only)**

**Vision panels:**

- | Many options up to 1296 square inches **(45 minutes only)**
- | Many options up to 100 square inches **(60 and 90 minutes only)**

**Smoke and draft control gasket:**

- | Surface applied category "H" gasket system
- | Eligible for "S" label

