

9500-ME (5 PLY)

HOLLOW CORE, ULTRA HEAVY-DUTY, ANTI-WARPING CONSTRUCTION FOR INTENSIVE USE

- ❶ **STILES:** 1/8" (3 mm) thick veneer, longitudinally laminated by hot pressing with type 1 structural glue, as per ASTM D5456 93 (LVL), including a 7/8" (22 mm) piece of hardwood, matched with faces, for a total width of 4 3/16" (107 mm)
- ❷ **TOP AND BOTTOM RAILS:** 1/8" (3 mm) thick veneer, longitudinally laminated by hot pressing with type 1 structural glue, as per ASTM D5456 93 (LVL or laminated strand lumber LSL), for a total width of 3 5/16" (85 mm)
- ❸ **CORE:** 4 3/4" (120 mm) honeycomb. (100% recycled)
- ❹ **FACES:** Wood veneer (choice of face veneers; 2 ply plywood), hardboard panel or plastic laminate glued to composite crossband

LOCK BLOCK: Integrated

GLUE: Type 1 PVA Cross link (UFF)

INTERIOR USE

WARRANTY: LIFETIME

OPTIONS

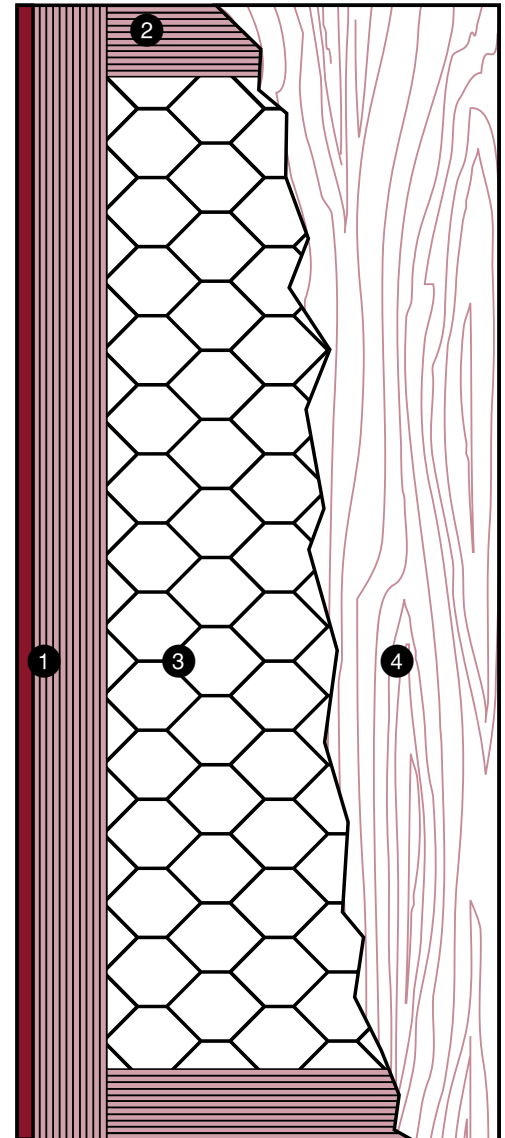
| Wood veneer glued to veneer plywood (3 ply plywood)

| ** To get M.R. 7.0, specify FSC wood veneer faces

| *** To get I.E.Q. 4.4, specify UFF wood veneer faces

NOTE

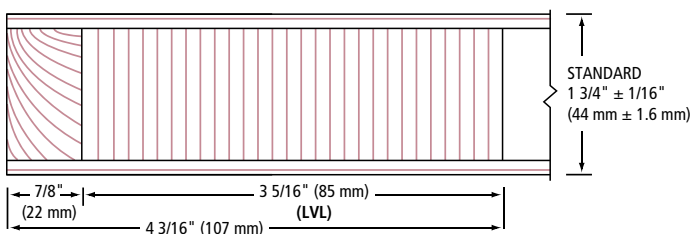
| Dimensions are nominal before trimming.



| | | | | | | | | |
|------------------------------------|-----|-----|-----|-----|------|-----|-----------|--|
| LEED ELIGIBLE CREDITS | 4.1 | | 4.2 | | M.R. | | I.E.Q. | |
| | 4.1 | 4.2 | 5.1 | 5.2 | 6.0 | 7.0 | 4.4 (UFF) | |
| | | | ✓ | ✓ | | ** | *** | |

Standards meet or exceed:
AWS section 9, Octobre 1, 2009,
W.D.M.A. 1.S.1A 04 and
CSA 0132.2 90

❶ STILES ME



❷ RAILS

