

8500-ME (5 PLY)

PARTICLE CORE, ULTRA HEAVY-DUTY, ANTI-WARPING CONSTRUCTION FOR INTENSIVE USE

- ❶ **STILES:** 1/8" (3 mm) thick veneer, longitudinally laminated by hot pressing with type 1 structural glue, as per ASTM-D5456-93 (LVL), including a 7/8" (22 mm) piece of hardwood, matched with faces, for a total width of 4 3/16" (107 mm)
- ❷ **TOP AND BOTTOM RAILS:** 1/8" (3 mm) thick veneer, longitudinally laminated by hot pressing with type 1 structural glue, as per ASTM-D5456-93 (LVL) or laminated strand lumber (LSL), for a total width of 3 5/16" (85 mm)
- ❸ **CORE:** Solid particleboard. Density of 28-32 lbs per cubic foot. Complies with CSA-0188 and ANSI A208-1 standards (LD-1/LD-2)
- ❹ **FACES:** Wood veneer (choice of face veneers; 2 ply plywood), hardboard panel or plastic laminate glued to composite crossband

LOCK BLOCK: Integrated

GLUE: Type1 PVA Cross-link (UFF)

INTERIOR USE

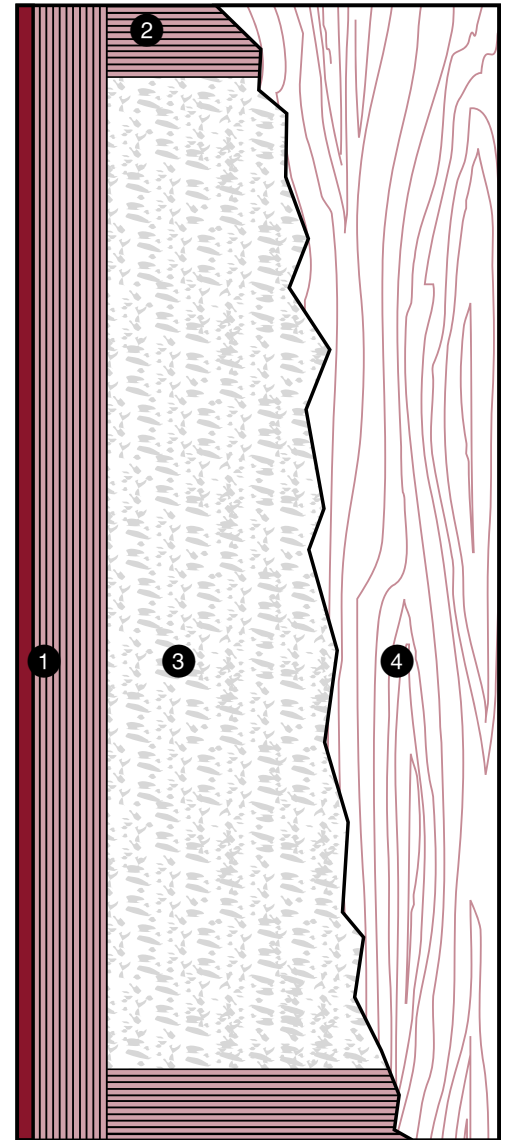
WARRANTY: LIFETIME

OPTIONS

- | 20 minute fire rating, specify 8520-ME
- | Wood veneer glued to veneer plywood (3 ply plywood)
- | Autonomy door available, specify 8513-ME or 8513-ME-AF
- | * To get M.R. 6, specify agrifibre core (8500-ME-AF)
- | ** To get M.R. 7, specify agrifibre core (8500-ME-AF) and FSC wood veneer faces
- | *** To get I.E.Q. 4.4, specify agrifibre core (8500-ME-AF) and UFF wood veneer faces

NOTE

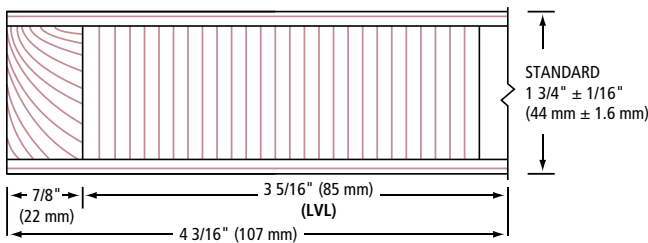
| Dimensions are nominal before trimming.



LEED ELIGIBLE CREDITS	M.R.		I.E.Q.				
	4.1	4.2	5.1	5.2	6	7	4.4 (UFF)
	✓	✓	✓	✓	*	**	***

Standards meet or exceed:
A.W.I./A.W.M.A.C. section 1300: 2.0 2005,
W.D.M.A. 1.S.1A-04 and CSA 0132.2 90

❶ STILES ME



❷ RAILS

