

8600-MO/ME/VE (5 PLY)

PARTICLE CORE, FOR INTENSIVE USE

- 1 STILES:** Hardwood or laminated strand lumber (LSL) or **1/8" (3 mm)** thick veneer, longitudinally laminated by hot pressing with type 1 structural glue, as per ASTM D5456 93 (LVL FSC), including a **7/8" (22 mm)** piece of hardwood, for a total width of **1 3/16" (30 mm)**:
MO: Manufacturer's choice
ME: Matched with faces
VE: Covered with 1/32" (0.7938 mm) wood veneer, matched with faces
- 2 TOP AND BOTTOM RAILS:** **1 3/16" (30 mm)** in wood or SCL, manufacturer's choice (LVL FSC or LSL).
- 3 CORE:** Solid particleboard. Density of 28 32 lbs per cubic foot. Complies with CSA 0188 and ANSI A208 1 standards (LD 1/LD 2). Available UFF/FSC LD 2.
- 4 FACES:** Wood veneer (choice of face veneers; 2 ply plywood), hardboard panel or plastic laminate glued to composite crossband, available UFF/FSC, depending on choice.

LOCK BLOCK: Integrated

GLUE: Type1 PVA Cross link (UFF)

INTERIOR USE

REFERENCE FPC 5/FPC 7 (AWI/AWMAC)

WARRANTY: LIFETIME

OPTIONS

| 20 minute fire rating, specify 8620 MO or 8620 ME UFF/FSC or 8620 ME/AF

| Wood veneer glued to veneer plywood (3 ply plywood)

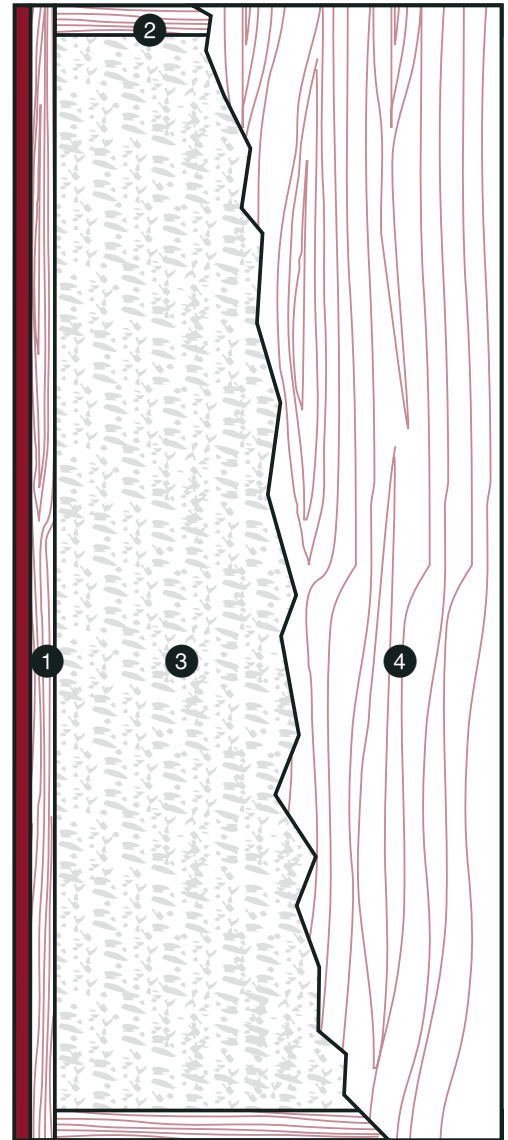
| * To get M.R. 6.0, specify agrifibre core (8620 MO AF • 8620 ME/AF • 8620 VE/AF)

| ** To get M.R. 7.0. **Option 1:** specify solid particleboard core UFF/FSC (8600 MO UFF/FSC • 8600 ME UFF/FSC • 8600 VE UFF/FSC). Specify FSC faces to optimize. **Option 2:** specify agrifibre core with FSC faces only when M.R. 6.0 is also required

| *** To get I.E.Q. 4.4, specify solid particleboard core UFF/FSC (8600 MO UFF/FSC • 8600 ME UFF/FSC • 8600 VE UFF/FSC) or agrifibre core (8620 MO AF • 8620 ME/AF • 8620 VE/AF) and UFF or UFF/FSC faces

NOTE

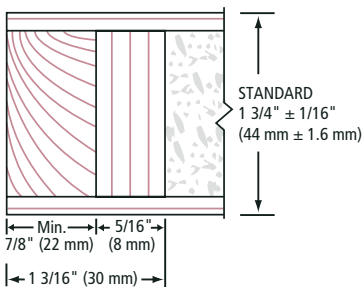
| Dimensions are nominal before trimming.



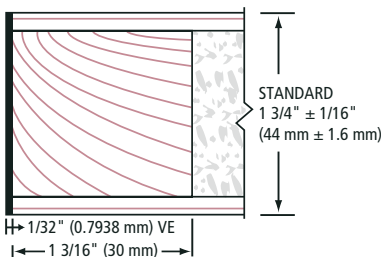
LEED ELIGIBLE CREDITS	M.R.		I.E.Q.				
	4.1	4.2	5.1	5.2	6.0	7.0	4.4 (UFF)
	✓	✓	✓	✓	*	**	***

Standards meet or exceed:
 AWS section 9, Octobre 1, 2009,
 W.D.M.A. 1.S.1A 04 and
 CSA 0132.2 90

1 STILES MO/ME



1 STILES VE



2 RAILS

